



Up to
6,800 SF
For Lease

RETAIL SPACE

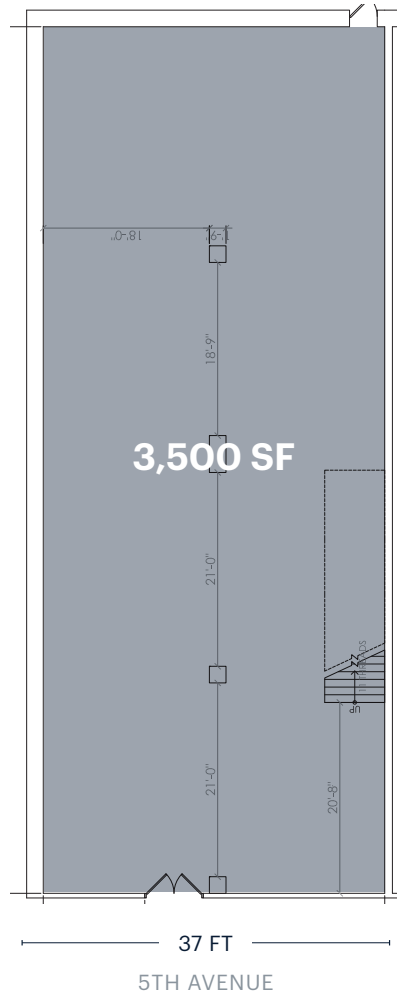
**5115
5TH AVENUE**

Between 51st and 52nd Streets

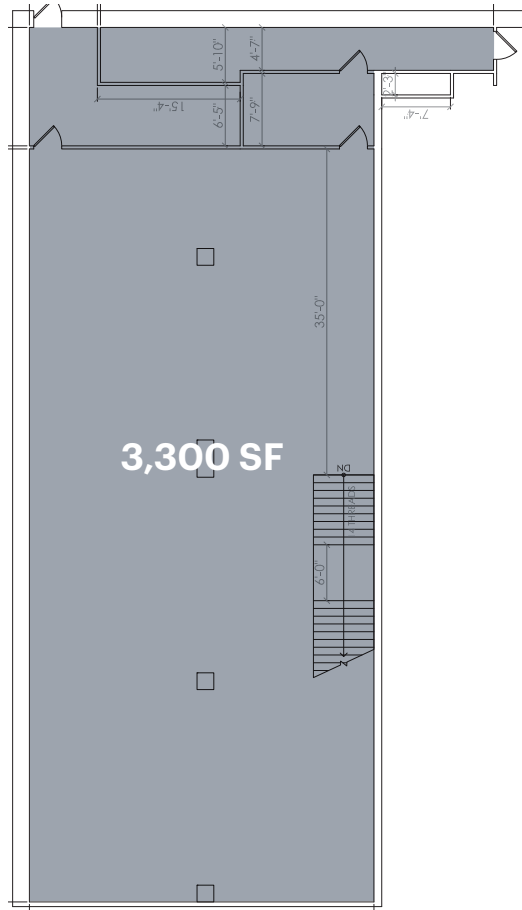
SUNSET PARK
BROOKLYN | NY

SPACE DETAILS

GROUND FLOOR



SECOND FLOOR



LOCATION

Between 51st and 52nd Streets

SIZE

Ground Floor	3,500 SF
Second Floor	3,300 SF
Total	6,800 SF

FRONTAGE

5th Avenue	37 FT
------------	-------

CEILING HEIGHTS

Ground Floor	12 FT
Second Floor	11 FT

STATUS

Currently Rainbow Shops

POSSESSION

Q2 2023

TERM

Long term

RENT

Upon request

NEIGHBORS

Diamond Braces, McDonalds, Five Below, CityMD, Snipes, and Foot Locker

AREA RETAIL



**CONTACT
 EXCLUSIVE
 AGENT**

HYMIE DWECK
 hdweck@ripcony.com
 646.827.9973

+ Coming Soon



32 Court Street
 10th Floor
 Brooklyn, NY 11201
 718.233.6565

Please visit us at ripcony.com for more information

This information has been secured from sources we believe to be reliable, but we make no representations as to the accuracy of the information. References to square footage are approximate. Buyer must verify the information and bears all risk for any inaccuracies.