



RETAIL SPACE

43-49 FAIRVIEW

HUDSON COUNTY
JERSEY CITY | NJ

3,500 SF

Seeking Community Based
Tenant for Former YMCA!

RIPCO
REAL ESTATE



SPACE DETAILS

SITE PLAN

LOCATION

Between Bergen Lafayette and Journal Sq.

SIZE

3,500 SF

RENT

Negotiable

NEIGHBORS

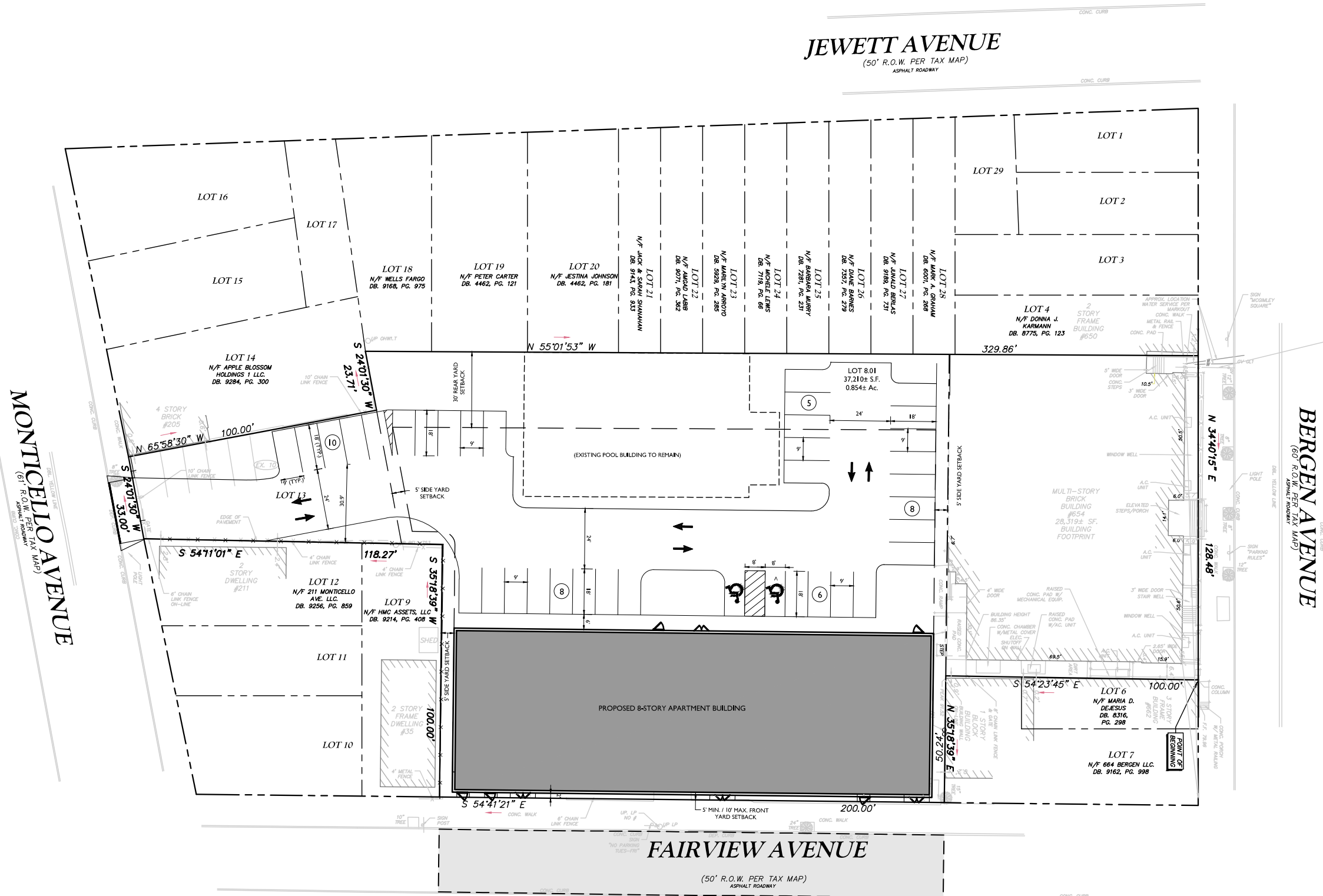
Carvao BBQ, Steak N Take, Goldy's Fried Chicken, M&T Bank, Dunkin', Burger King, Halftime Bar & Grill, Subway, Panda House, Astor Bar & Grill, Guerrero, Restaurante Brisas Del Valle, Checkers, Walgreens, Domino's, 7-Eleven, KFC, Autozone

COMMENTS

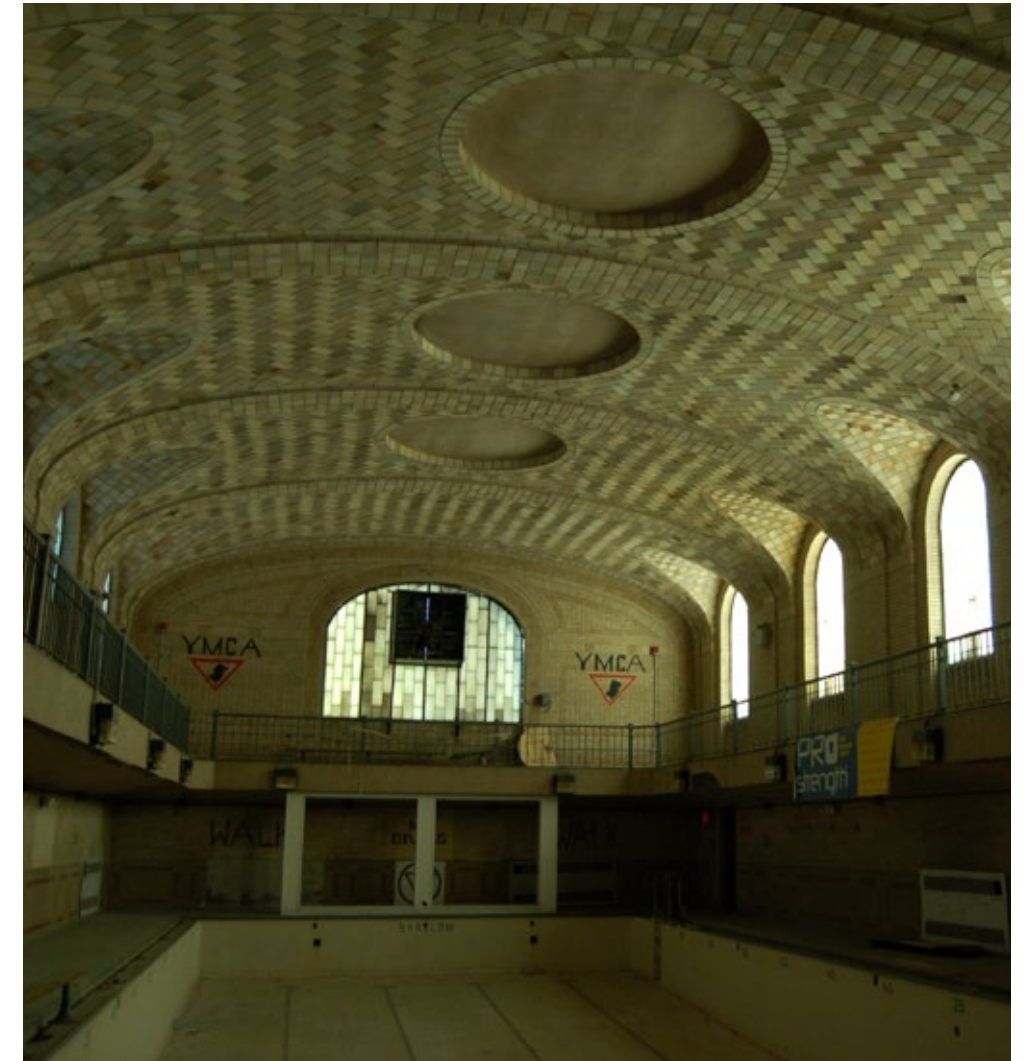
Former YMCA Pool Building

Located within the Jackson Hill Special Improvements District, this site will be developed into 92 mixed income rental units

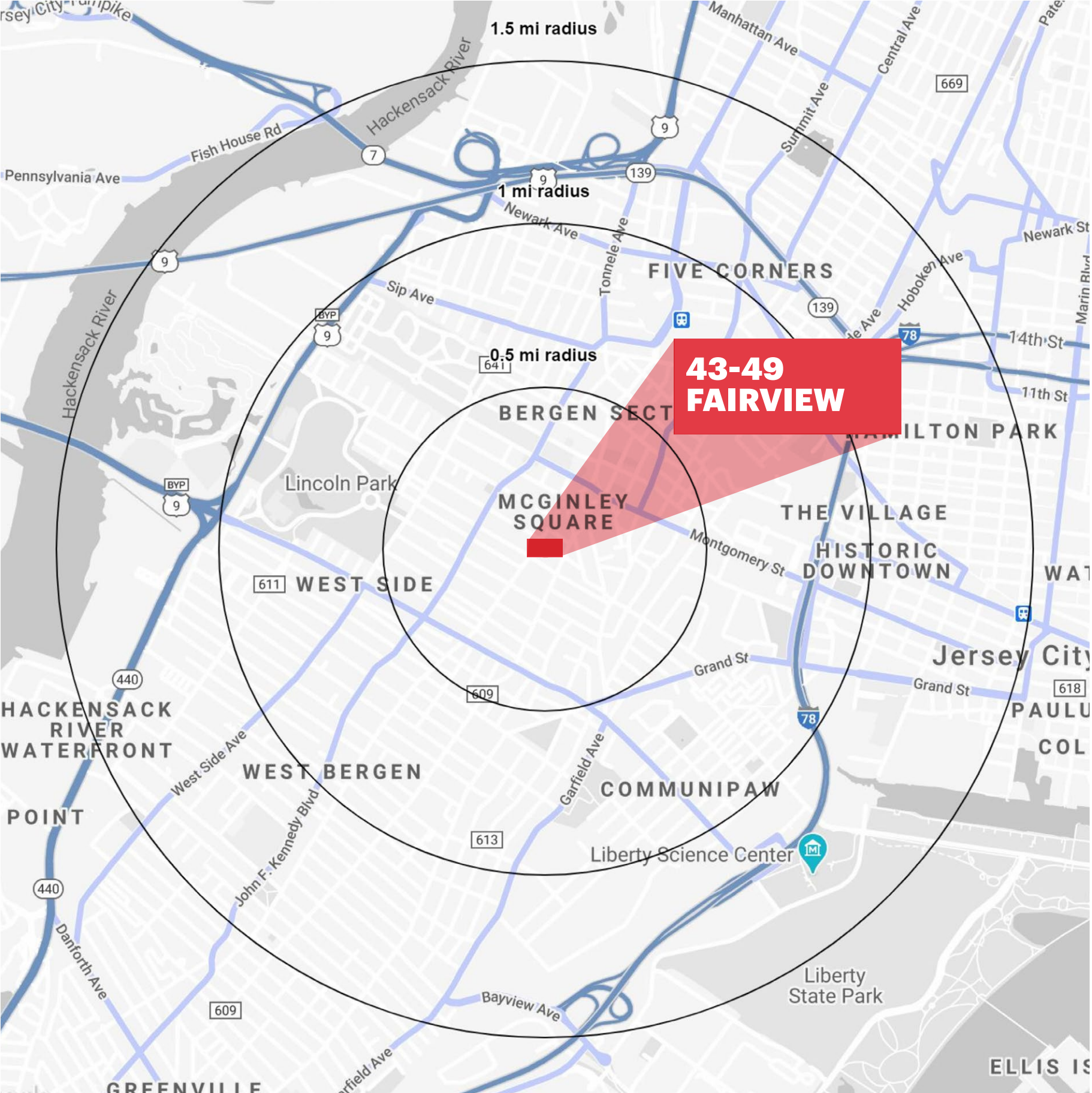
Seeking Community based tenants, including senior centers and adult daycares,



INTERIOR PHOTOS



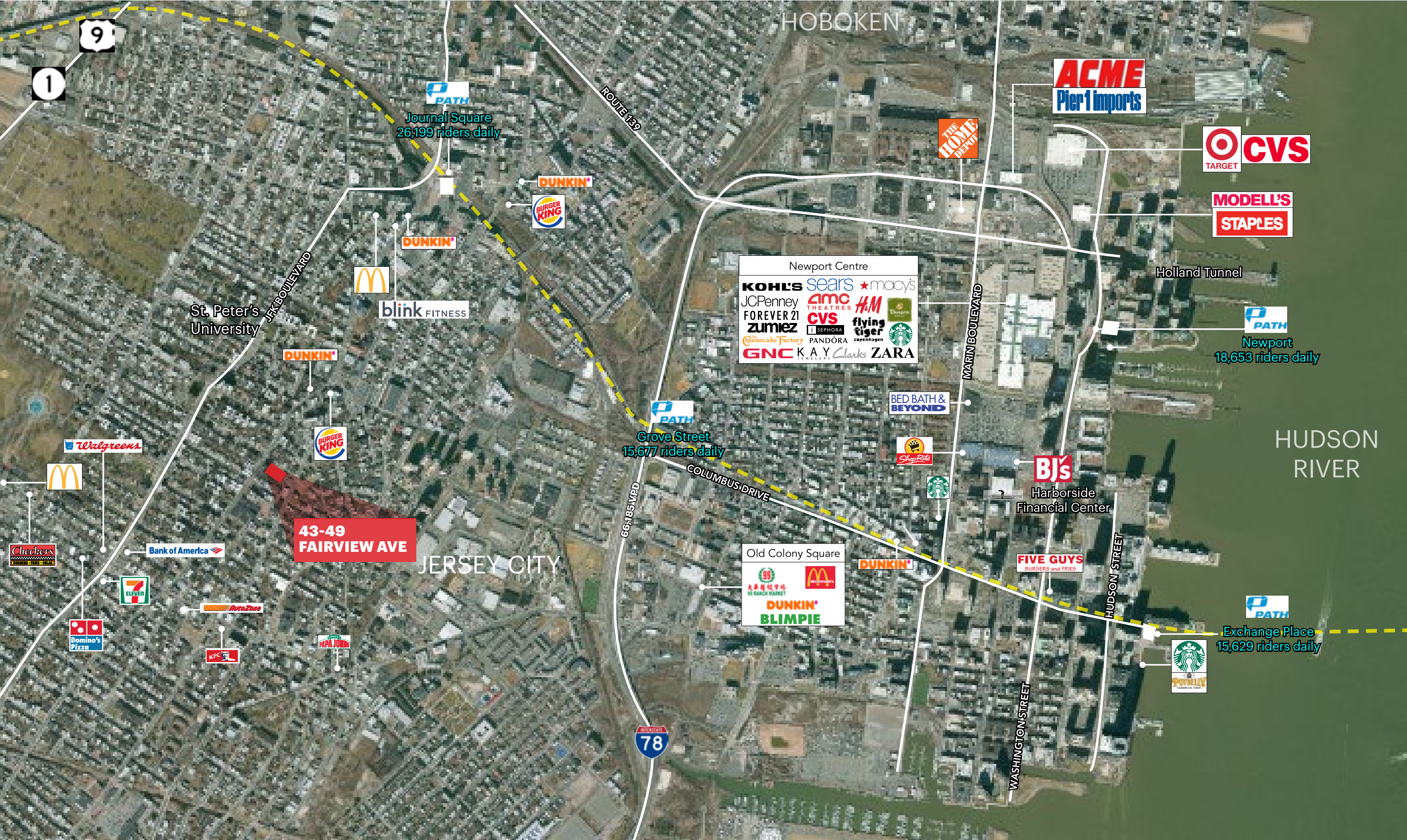
AREA DEMOGRAPHICS



ESTIMATED TOTAL POPULATION		TOTAL BUSINESSES	
.5 mile	33,179	.5 mile	660
1 miles	96,100	1 miles	2,310
1.5 miles	171,849	1.5 miles	4,207
ESTIMATED DAYTIME POPULATION		TOTAL EMPLOYEES	
.5 mile	27,955	.5 mile	10,274
1 miles	82,183	1 miles	30,334
1.5 miles	157,405	1.5 miles	70,454
AVERAGE HOUSEHOLD INCOME			
.5 mile	\$101,689		
1 miles	\$99,512		
1.5 miles	\$126,377		
TOTAL HOUSEHOLDS			
.5 mile	13,726		
1 miles	38,299		
1.5 miles	70,547		

*2024 estimates

MAP CATEGORY NAME



AREA RETAIL



**CONTACT
EXCLUSIVE
AGENTS**

LISA RICCA

lricca@ripconj.com

201.636.7449

RIPCO
REAL ESTATE

611 River Drive
3rd Floor
Elmwood Park, NJ 07407
201.777.2300

Please visit us at ripcony.com for more information

This information has been secured from sources we believe to be reliable, but we make no representations as to the accuracy of the information. References to square footage are approximate. Buyer must verify the information and bears all risk for any inaccuracies.