

**RETAIL SPACE**

# 430 EAST 14TH STREET

South block of East 14th Street between Avenue A and First Avenue

**EAST VILLAGE**

NEW YORK | NY

**4,792 SF**  
Ground Floor



**RIPCO**  
REAL ESTATE

## ADDITIONAL PHOTOS



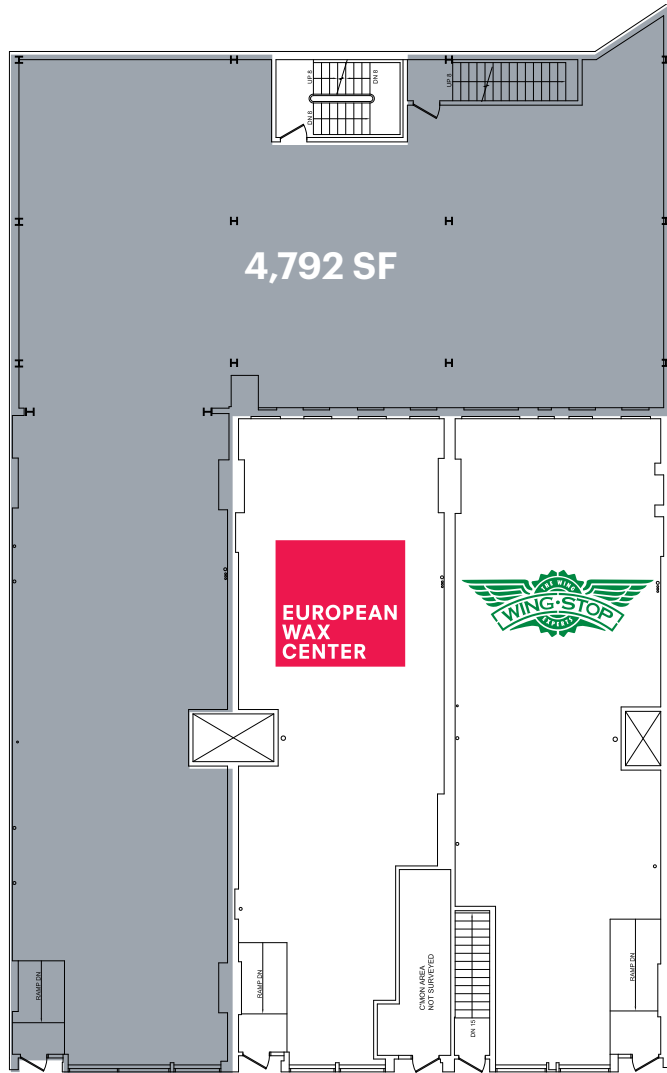
*Straight-on photo*



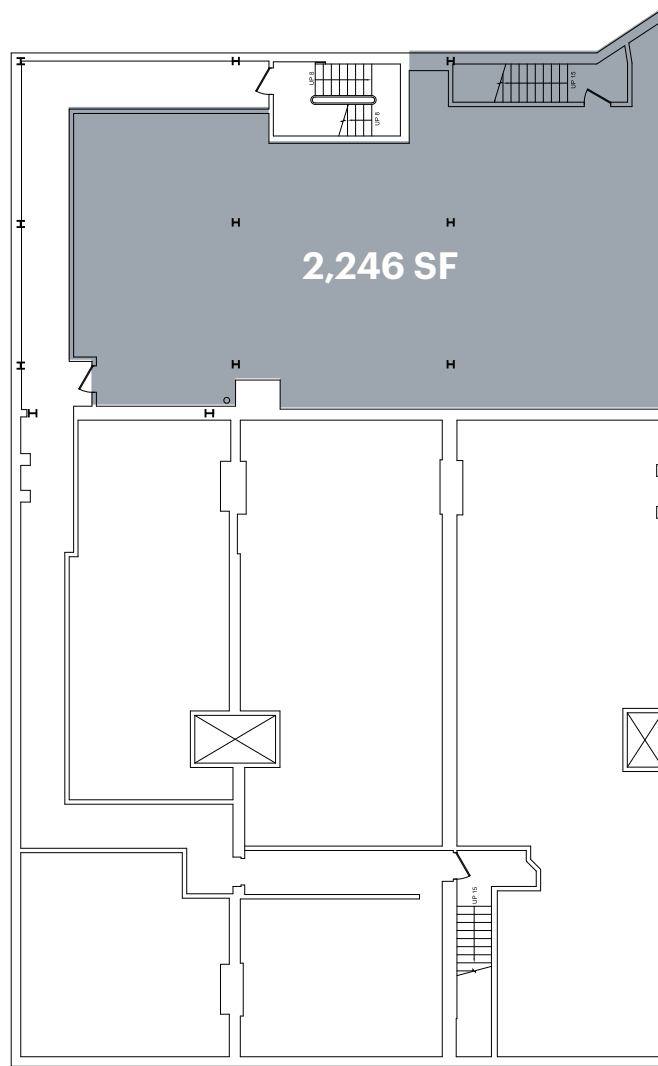
*View looking west, with co-tenants at the building*

# SPACE DETAILS

## GROUND FLOOR



## LOWER LEVEL



25 FT

EAST 14TH STREET

## LOCATION

South block of East 14th Street  
between Avenue A and First Avenue

## SIZE

Ground Floor 4,792 SF  
Lower Level 2,246 SF

## FRONTAGE

East 14th Street 25 FT

## CEILING HEIGHTS

Ground Floor 11 FT - 11 FT 5 IN  
Lower Level\* 11 FT 7 IN  
\*slab to slab

## POSSESSION

Immediate

## NEIGHBORS

Trader Joe's, Target, Taverna Kyclades, CVS, Momofuku, The Garret East, Westville, Boris & Horton, Baker's Pizza and Mikey Likes It Ice Cream

## COMMENTS


Directly next to the new Trader Joe's and across the street from Target

Space is located in a dense residential area that includes Alphabet City and Stuyvesant Town/ Peter Cooper Village with over 11,000 apartments in the complex

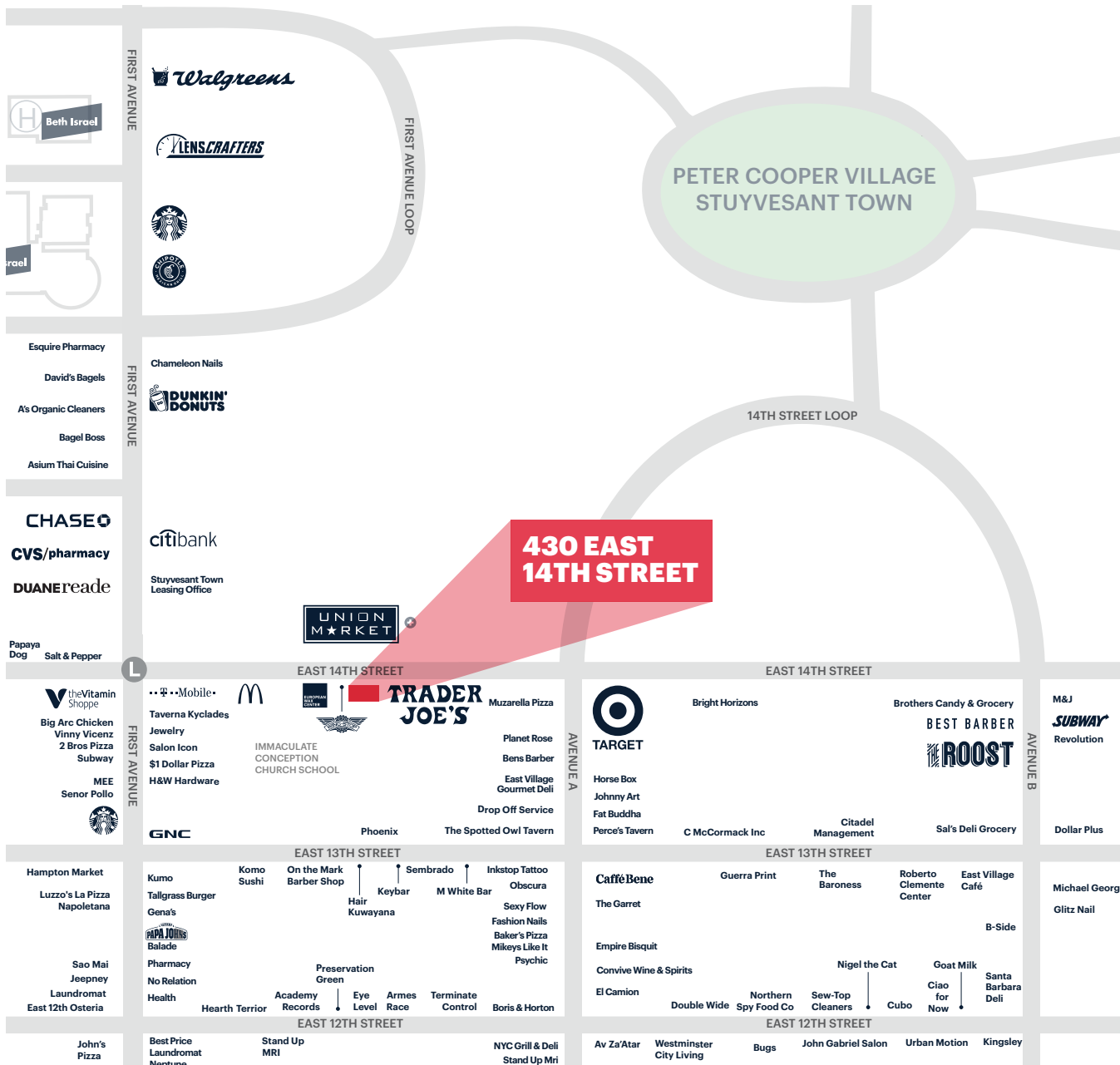
Adjacent to the L train subway entrance

## TRANSPORTATION

2019 Ridership Report

**First Avenue - 14th Street**   
Annual 5,345,371  
Weekday 18,393  
Weekend 12,273

# AREA RETAIL



## CONTACT EXCLUSIVE AGENTS

**RICHARD SKULNIK**  
rskulnik@ripcony.com  
212.750.0756

**LINDSAY ZEGANS**  
lzegans@ripcony.com  
646.827.9962

**MARY SCHWAGERL**  
mschwagerl@ripcony.com  
212.230.5887

**RIPCO** REAL ESTATE | 150 East 58th Street  
15th Floor  
New York, NY 10155  
212.750.6565

Please visit us at [ripcony.com](http://ripcony.com) for more information

This information has been secured from sources we believe to be reliable, but we make no representations as to the accuracy of the information. References to square footage are approximate. Buyer must verify the information and bears all risk for any inaccuracies.

+ Coming Soon