

COMMUNITY USE/MEDICAL/OFFICE

336 HIMROD STREET - GLASSWORKS

Between Wyckoff and Irving Avenues

BUSHWICK
BROOKLYN | NY

1,522 SF
Community Use



SPACE DETAILS

LOCATION

East side of Himrod Street between Wyckoff and Irving Avenues

SIZE

Ground Floor 1,522 SF

FRONTAGE

Himrod Street Approx. 40 FT

CEILING HEIGHTS

Ground Floor 12 FT

ASKING RENT

Upon Request

TAXES

Proportionate share of increases over a base year

CURRENTLY

New construction

POSSESSION

Immediate

NEIGHBORS

Variety Coffee Roasters, Ops, Top City Gourmet, Wyckoff Realty, Naturally Healthy, B&S Wine and Spirits, Sally Roots, Happy Nails & Hair, Akaru Sushi, State Farm, Marino Pharmacy, Subway, Dunkin' Donuts, Talon Bar

COMMENTS

Join a new ground floor medical Tenant within the building.

Be at the base of the 63 unit Glassworks, Bushwick's nicest residential building.

Community Facility space ideal for a variety of users.


New construction, white-boxed space at the base of a luxury residential apartment building.



High ceilings and an abundance of frontage along Himrod Street.

Space has exposed brick.

TRANSPORTATION

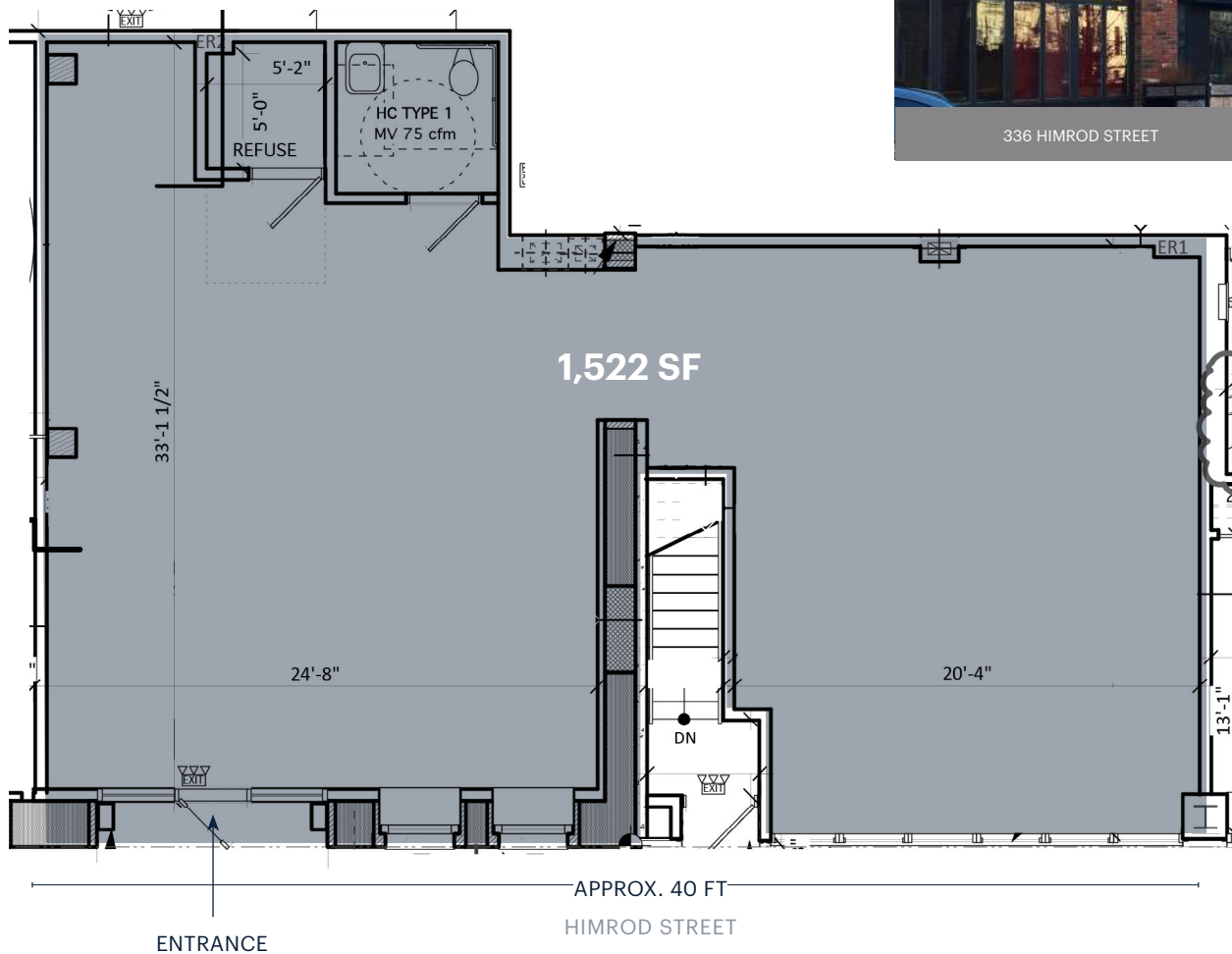
2022 Ridership Report

Dekalb Avenue 
Annual 2,485,248
Weekday 7,710
Weekend 9,599

Myrtle-Wyckoff Avenues  
Annual 4,276,355
Weekday 13,075
Weekend 17,416



COMMUNITY FACILITY FLOORPLAN



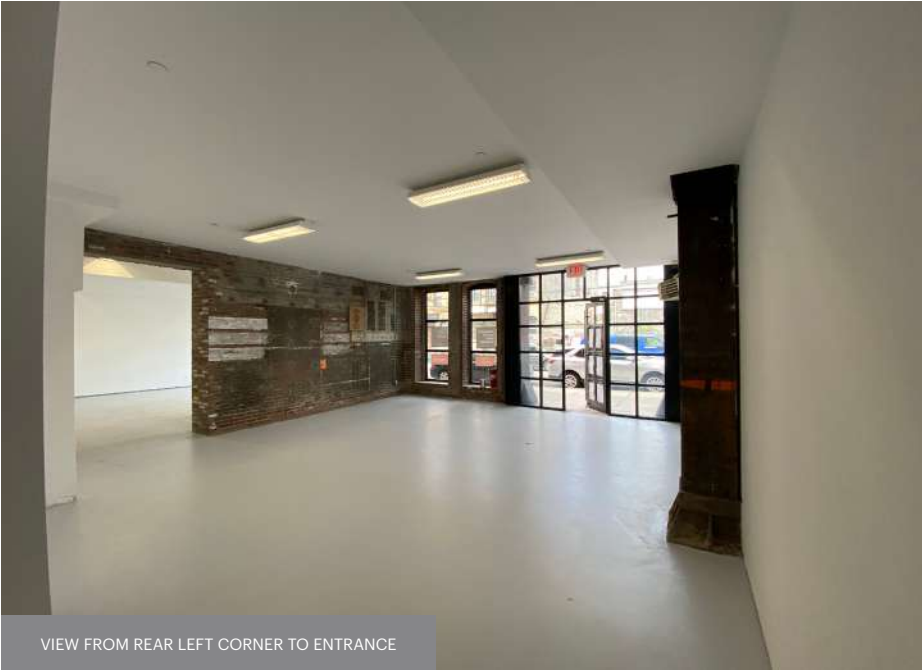
ADDITIONAL PHOTOS



VIEW FROM ENTRANCE

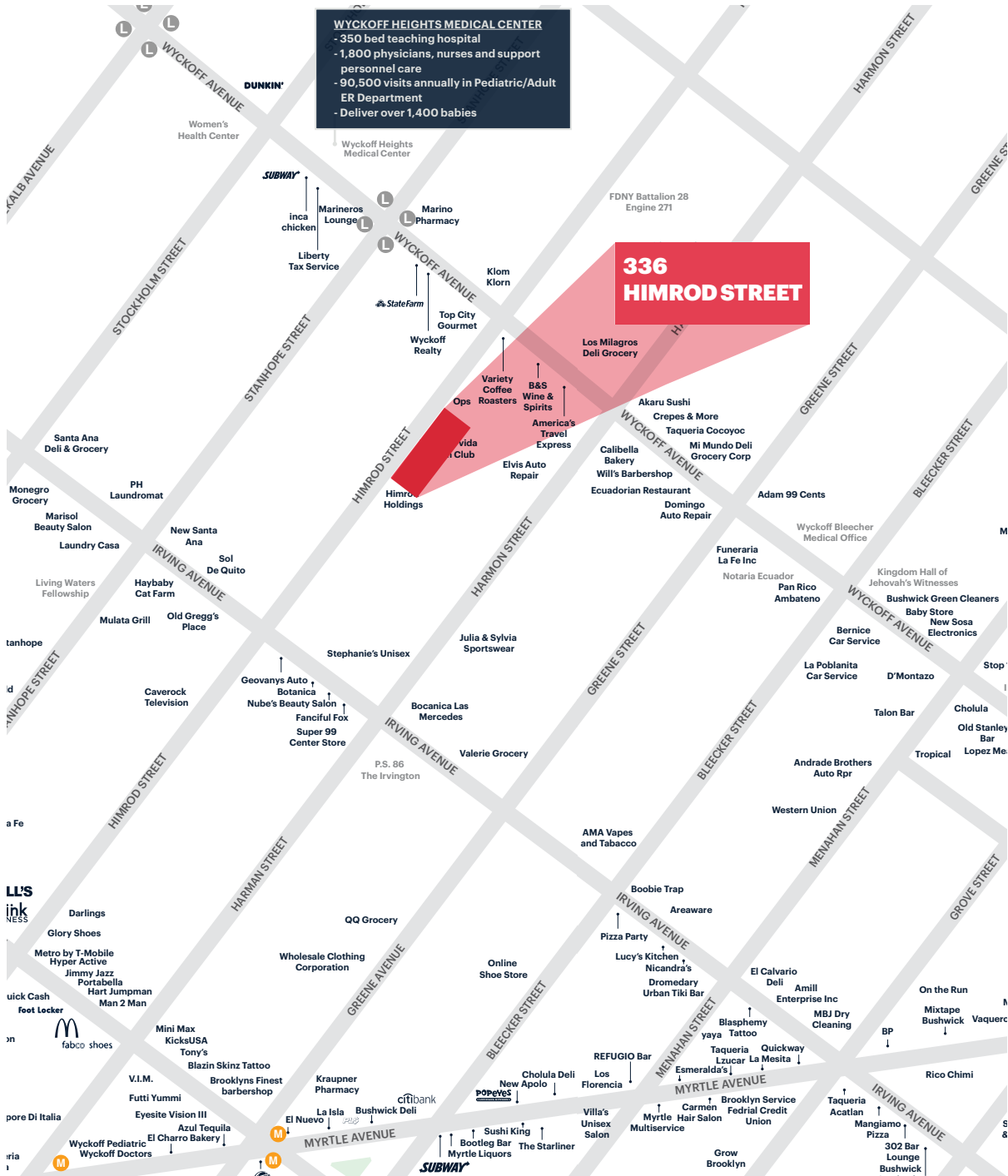


VIEW FROM REAR RIGHT CORNER



VIEW FROM REAR LEFT CORNER TO ENTRANCE

AREA RETAIL



CONTACT EXCLUSIVE AGENTS

BEN WEINER
 bweiner@ripcony.com
 718.233.6565

SCOTT ROTHSTEIN
 srothstein@ripcony.com
 718.233.6565

ABRAHAM DAYAN
 adayam@ripcony.com
 212.750.6565

RIPCO
 REAL ESTATE

32 Court Street
 10th Floor
 Brooklyn, NY 11201
 718.233.6565



Please visit us at ripcony.com for more information

This information has been generated from sources we believe to be reliable, but we make no representations as to the accuracy of the information. References to square footage are approximate. Buyer must verify the information and bears all risk for any inaccuracies.