



POTENTIAL SIGNAGE

4,000 SF
Available for Lease

RETAIL SPACE

2512 BROADWAY

Between 93rd and 94th Streets

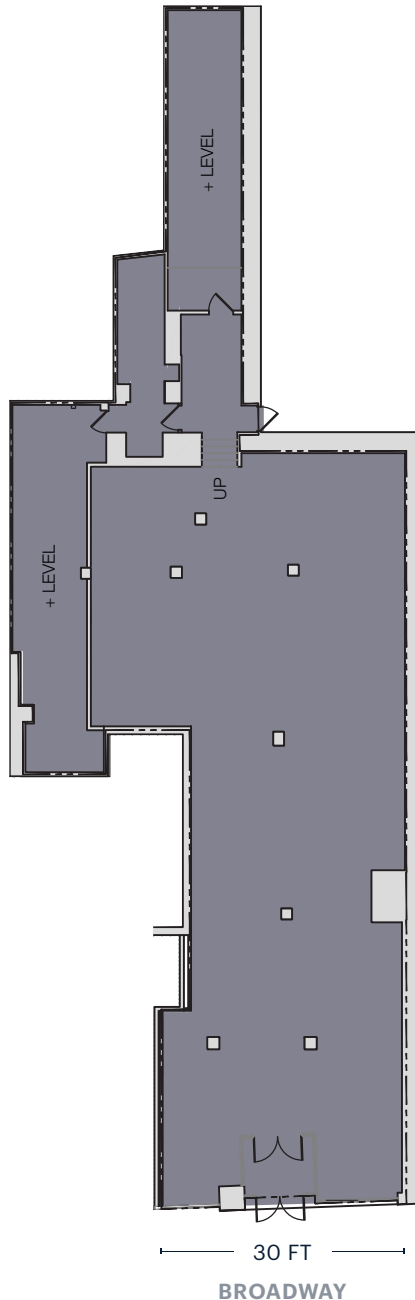
UPPER WEST SIDE

NEW YORK | NY

RIPCO
REAL ESTATE

SPACE DETAILS

GROUND FLOOR



LOCATION

Between 93rd and 94th Streets

SIZE

Ground Floor 4,000 SF
Basement 2,500 SF

FRONTAGE

Broadway 30 FT

CEILING HEIGHTS

Ground Floor 11 FT 8 IN to 14 FT

NEIGHBORS

Corner Cafe, Vino Levantino, Wyndham/Days Inn Hotel, Goddard School, CVS, Duane Reade, Starbucks

AREA ATTRACTIONS

Symphony Space
Cleopatra's Needle

COMMENTS

All quality uses considered
New interior skylights
Directly in front of subway entrance (1,2,3 lines)
Easily vented

BANNER/BLADE SIGNAGE

20-25 FT two-sided blade opportunity
Subject to municipal approval and permit

TRANSPORTATION

2017 Ridership Report

96 Street

Annual 11,948,981
Weekday 37,043
Weekend 46,701

M104

Annual 2,629,563
Weekday 7,587
Weekend 16,265

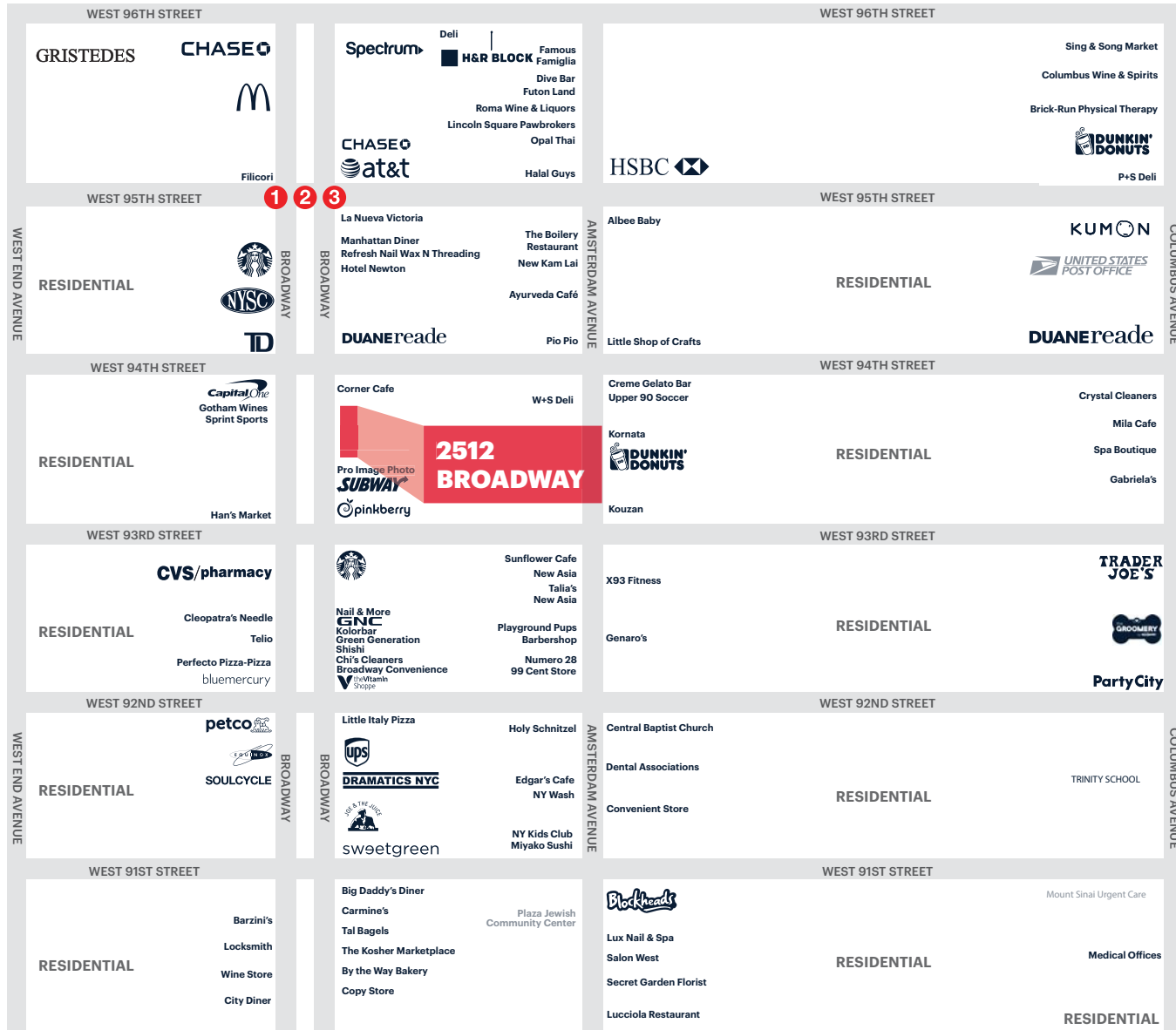
M96

Annual 4,039,123
Weekday 13,995
Weekend 10,996

INTERIOR PHOTOS



AREA RETAIL



CONTACT EXCLUSIVE AGENTS

DOUG KLEIMAN
 dkleiman@ripcony.com
 212.750.6565

ERIC FISHER
 efisher@ripcony.com
 212.750.6565