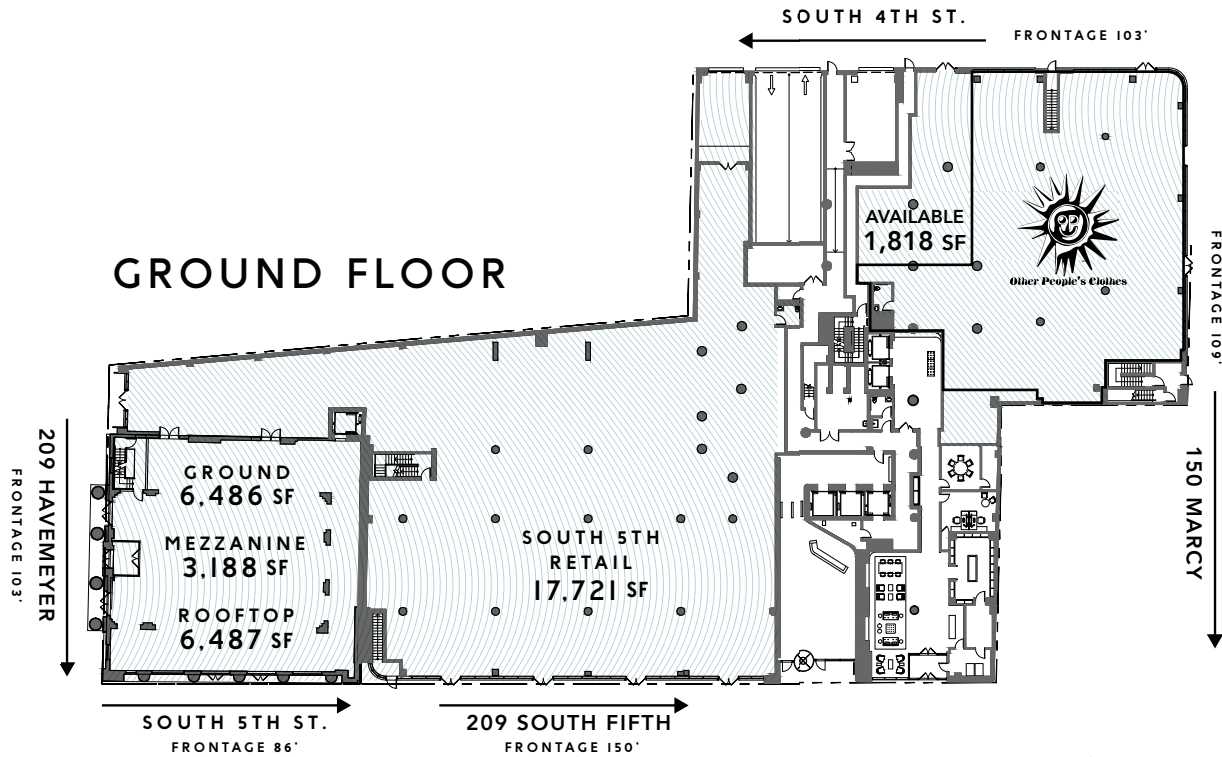


WILLIAMSBURG
ICONIC BROOKLYN
FLAGSHIP
RETAIL
OPPORTUNITY



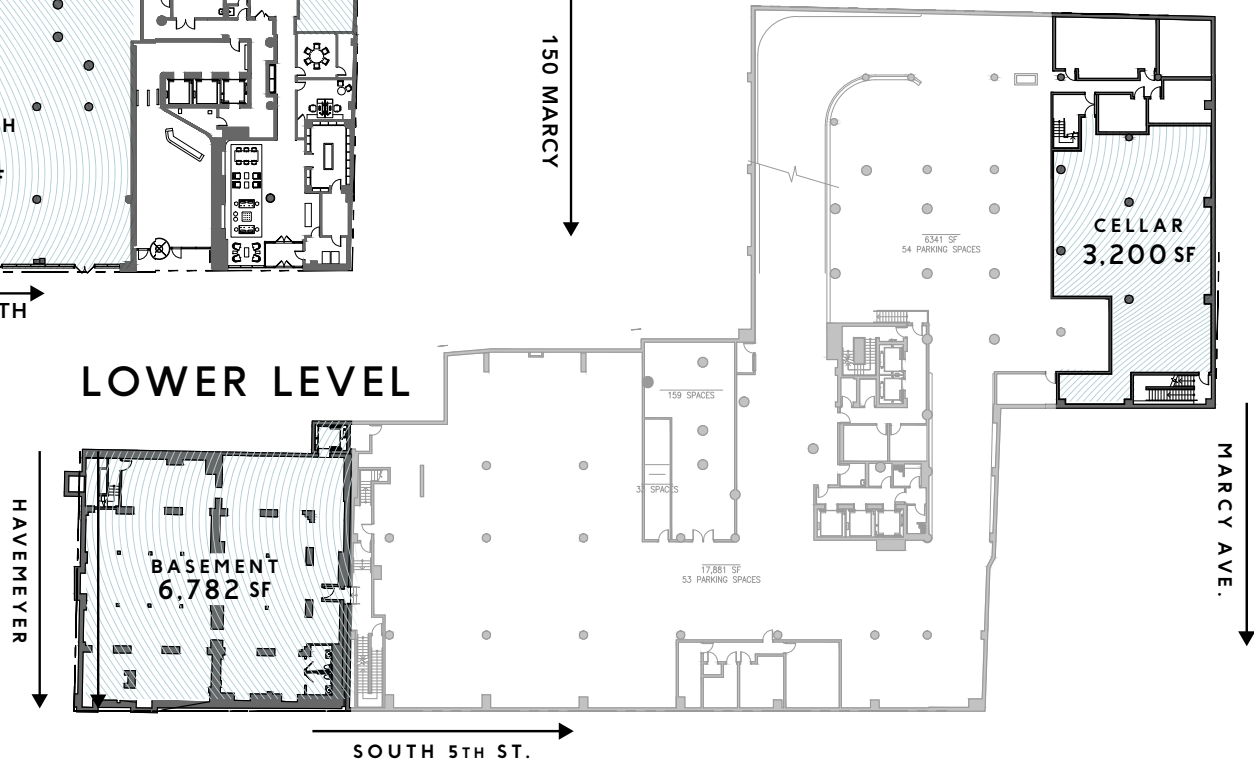
FLOORPLANS

GROUND FLOOR

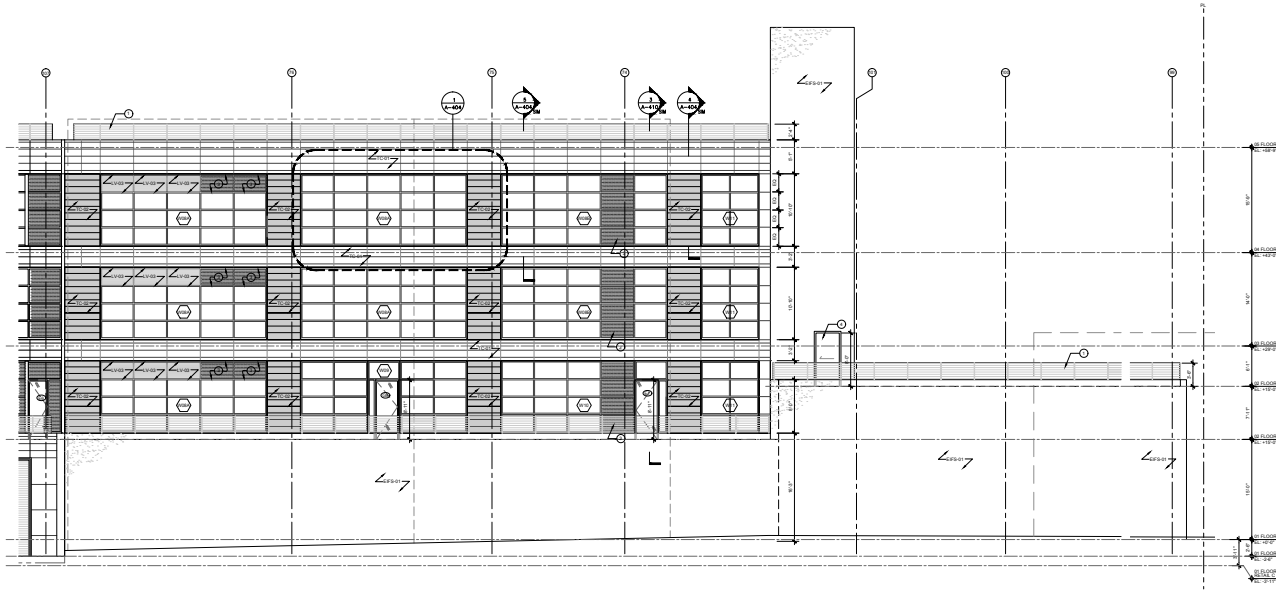


- PARKING - 300 Space Garage, on-site
- LOADING DOCKS - Easy Access

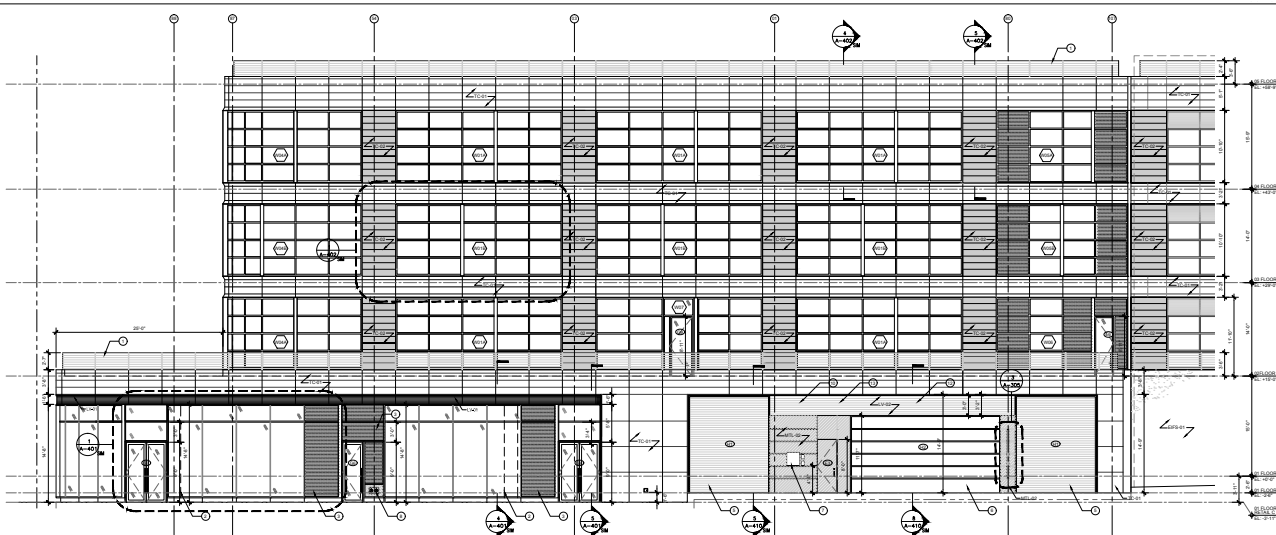
LOWER LEVEL



ELEVATION PLANS

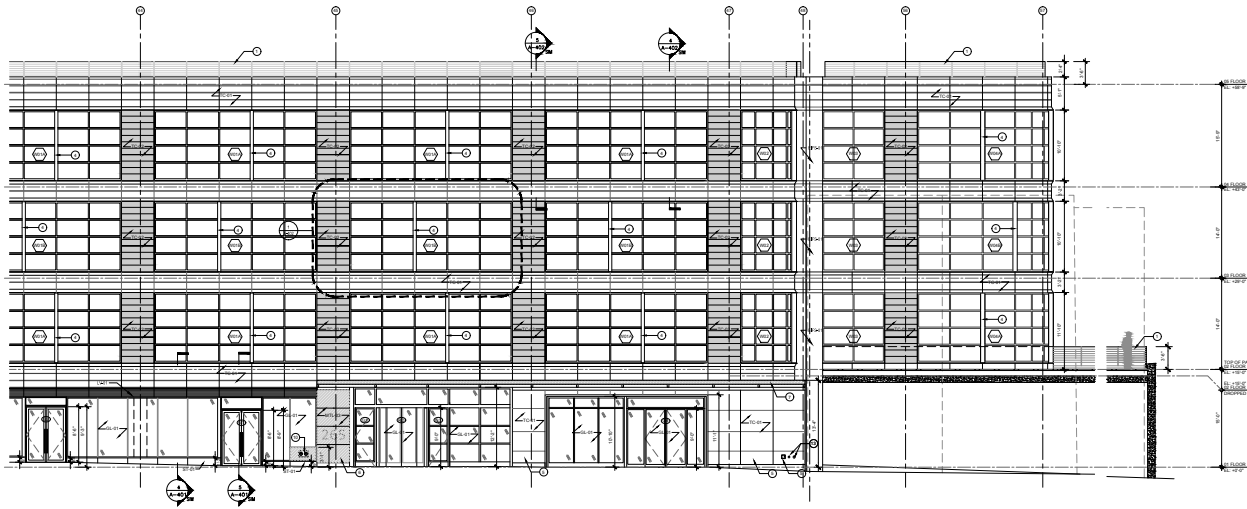


ENLARGED ELEVATION
North Podium
At South 4th Street

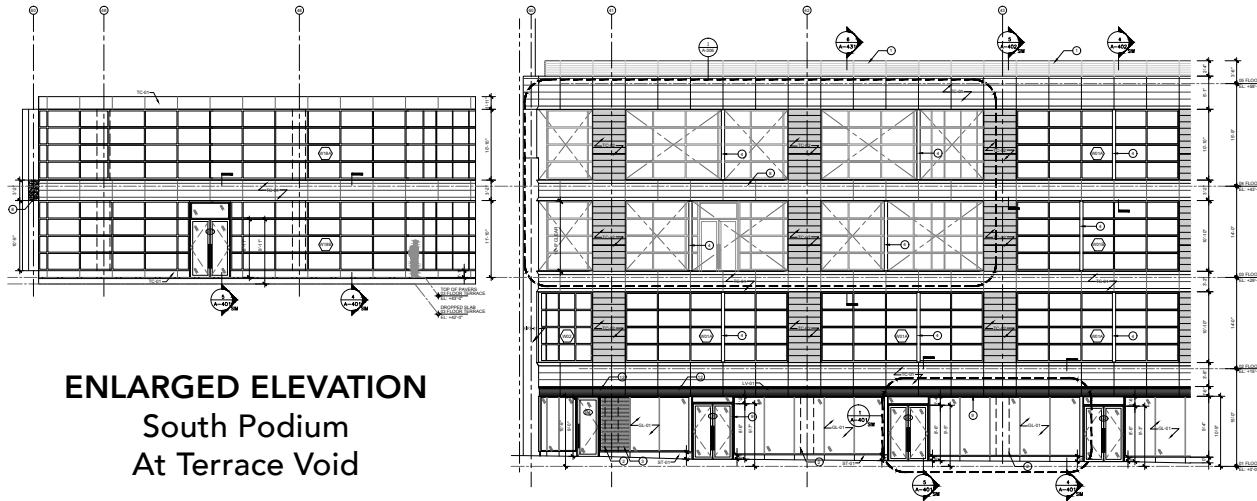


ENLARGED ELEVATION
North Podium
At South 4th Street

ELEVATION PLANS



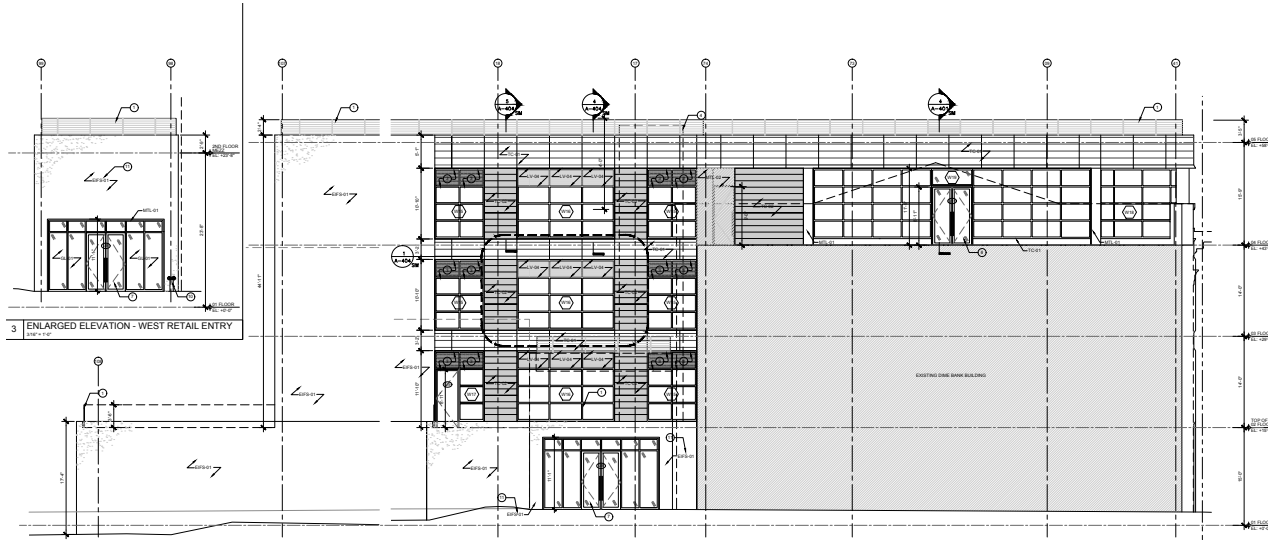
ENLARGED ELEVATION
South Podium
At South 5th Street



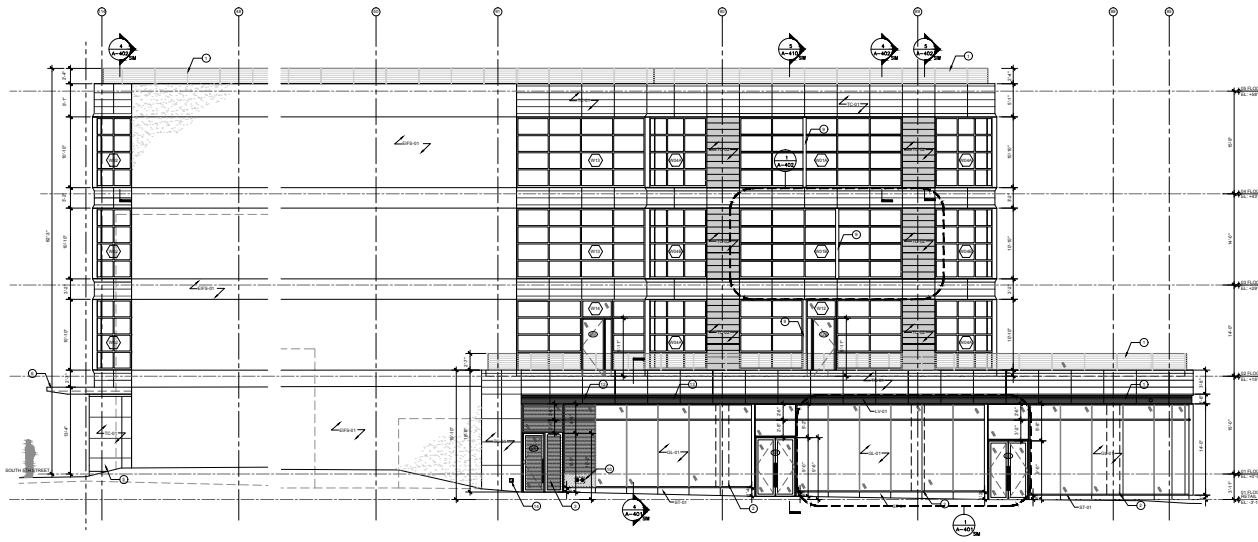
ENLARGED ELEVATION
South Podium
At Terrace Void

ENLARGED ELEVATION
South Podium
At South 5th Street

ELEVATION PLANS



ENLARGED ELEVATION
West Podium
At Havemeyer Avenue



ENLARGED ELEVATION
East Podium
At Marcy Avenue

UNIQUE SIGNAGE OPPORTUNITY



ARCHITECTURALLY SIGNIFICANT INTERIORS



THE DIME

Positioned in the Heart of Southside Williamsburg

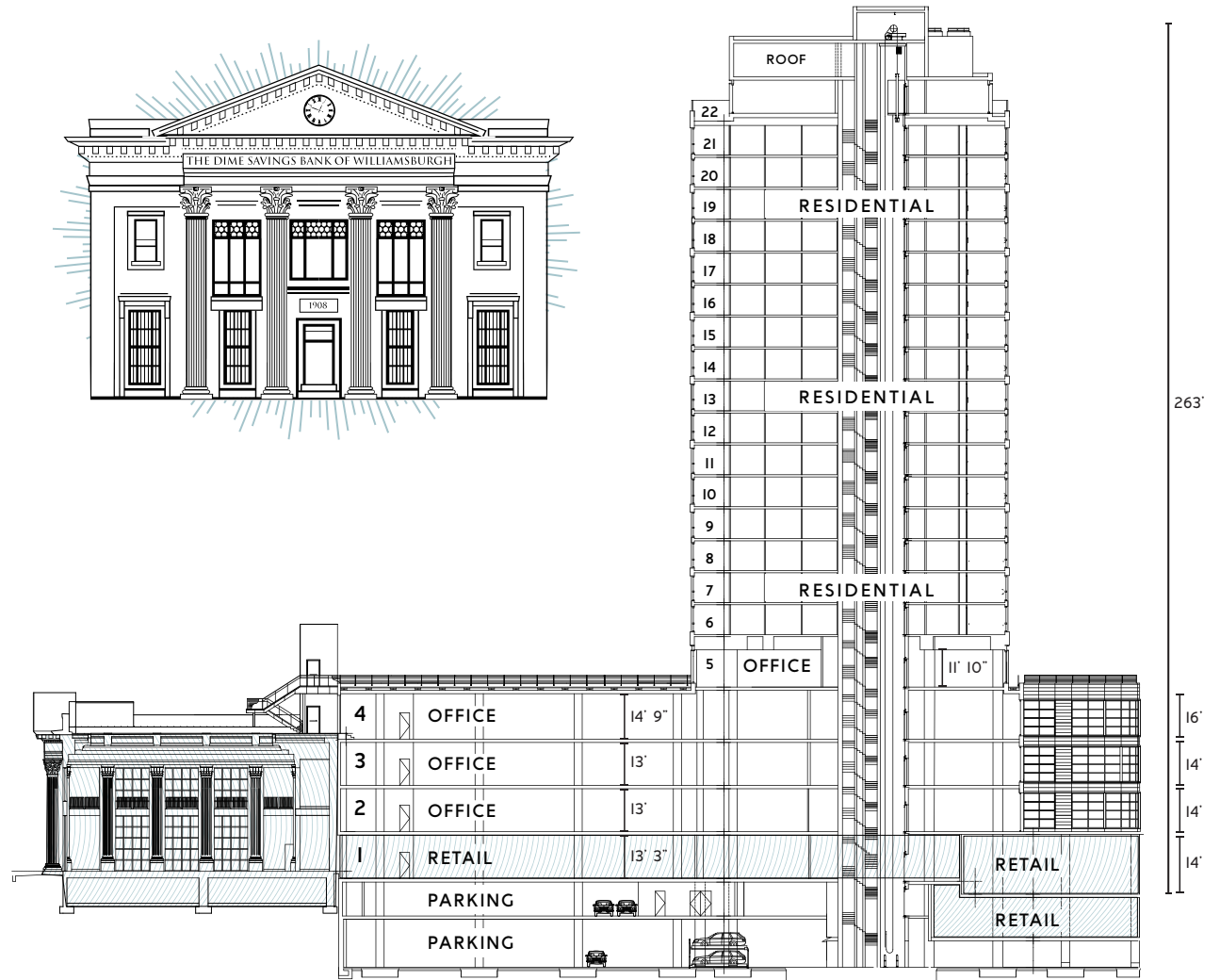
DESCRIPTION

The Dime is located at the base of a 23 story, state of the art mixed use tower, with approx. 177 residential units and 95,000 sq. feet of office space.



CEILING HEIGHTS

40 FEET	GROUND FLOOR OF BANK BUILDING
13-18 FEET	FIRST FLOOR OF NEW CONSTRUCTION
14 FEET	CELLAR



SITE PHOTOS



209 HAVEMEYER AND 275 SOUTH 5TH

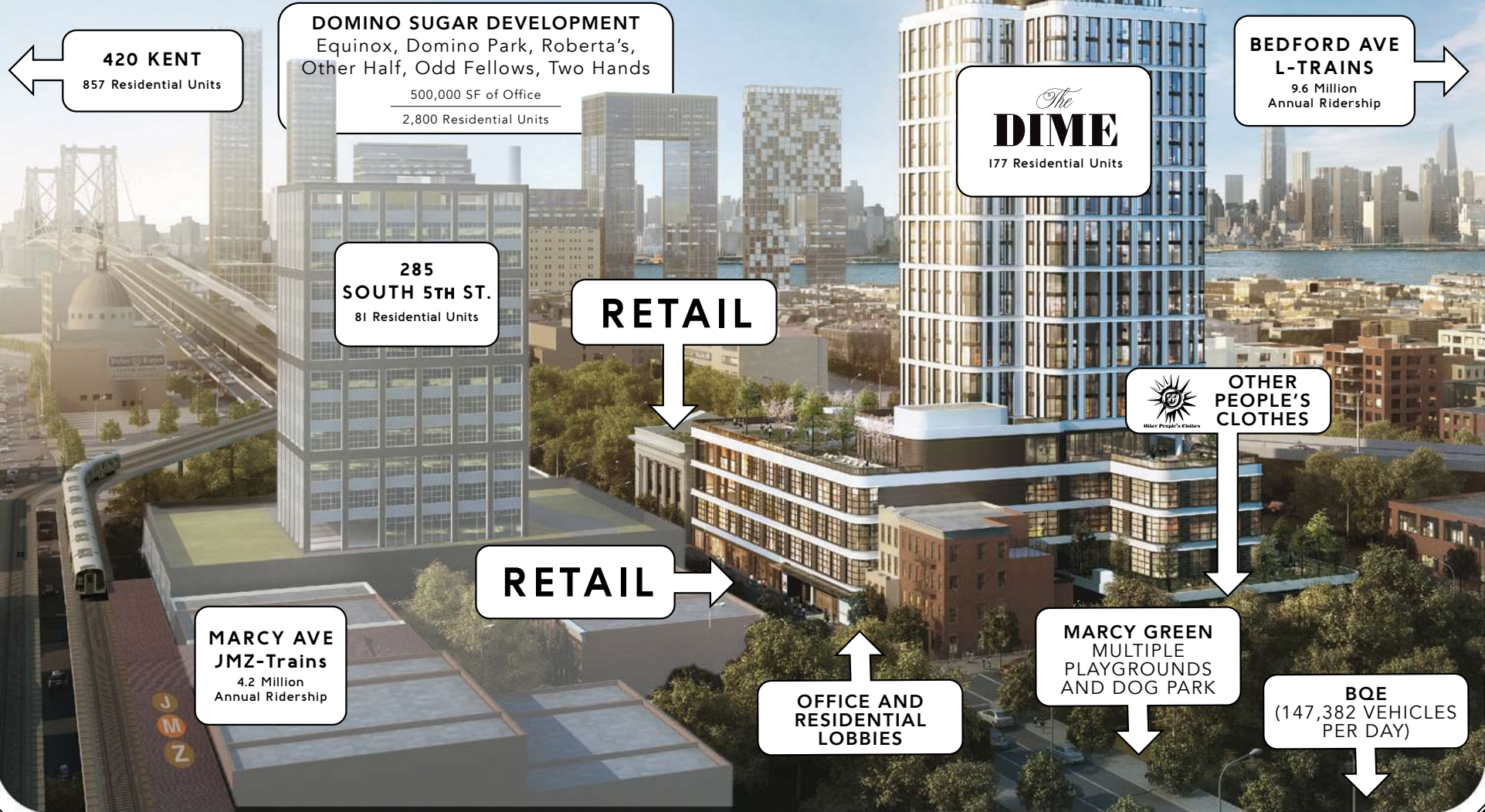


150 MARCY



150 MARCY

Proximity to Marcy Ave. JMZ Subway • One stop into Manhattan



WILLIAMSBURG BROOKLYN

LOCAL MAP

¼ MILE = 
40.7147°N, 73.9754°W

SELECTED BUSINESSES

- | | |
|-----------------------|-------------------------|
| 1 THE DIME | 25 LEVIS |
| 2 PETER LUGER | 26 JULIETTE |
| 3 DINER | 27 BAKERI |
| 4 MARLOW & SONS | 28 TOBY'S ESTATE COFFEE |
| 5 MARLOW & DAUGHTERS | 29 SMORGASBURG |
| 6 CITY ACRES MARKET | 30 FETTE SAU |
| 7 DOMINO DEVELOPMENT | 31 MILK BAR |
| 8 VICE MEDIA | 32 SWEET CHICK |
| 9 LOOSIE ROUGE | 33 MEATBALL SHOP |
| 10 PIES & THIGHS | 34 PETE'S CANDY STORE |
| 11 BAR BEAU | 35 WYTHE HOTEL |
| 12 TRAIFF | 36 REYNARD |
| 13 REBEN LUNCHEONETTE | 37 BK BREWERY |
| 14 MAIN DRAG MUSIC | 38 TORST |
| 15 4 HORSEMEN | 39 LLAMA INN |
| 16 WB CINEMAS | 40 KINGS CTY. IMPERIAL |
| 17 SWEATSHOP | 41 UNION POOL |
| 18 MAISON PREMIERE | 42 FORTUNATO BROTHERS |
| 19 APPLE | 43 SUZUME |
| 20 CATBIRD | 44 WIN SON |
| 21 MAST BROS | 45 BEAM |
| 22 J.CREW | 46 DEVOCIÓN |
| 23 MUSIC HALL | 47 FEATHERWEIGHT |
| 24 WHOLE FOODS | 48 BKLYN BALL FACTORY |

The
DIME
OFFICES

ALEX BEARD
abeard@ripcony.com
718.663.2640

JASON PENNINGTON
jpennington@ripcony.com
718.233.6565

ERIC FISHER
efisher@ripcony.com
646.290.2013



RIPCO
REAL ESTATE