

RETAIL SPACE

430 COLUMBUS AVENUE

Between West 80th and 81st Streets

UPPER WEST SIDE

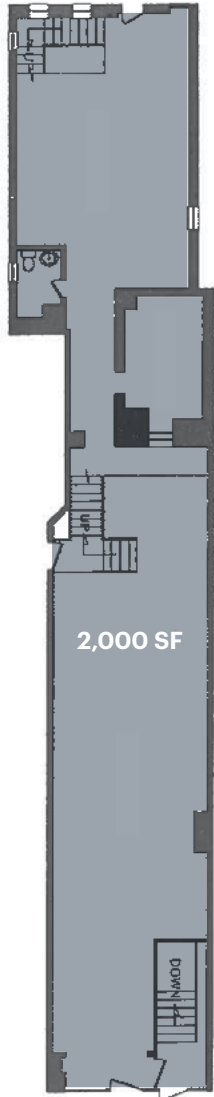
NEW YORK | NY

2,600 SF
Available for Lease

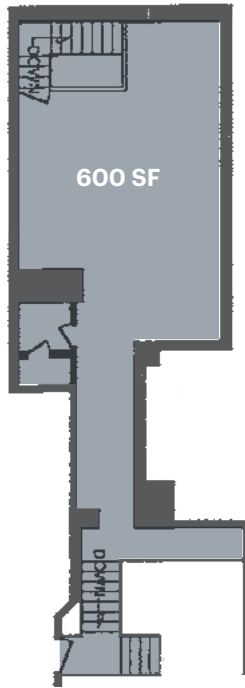


SPACE DETAILS

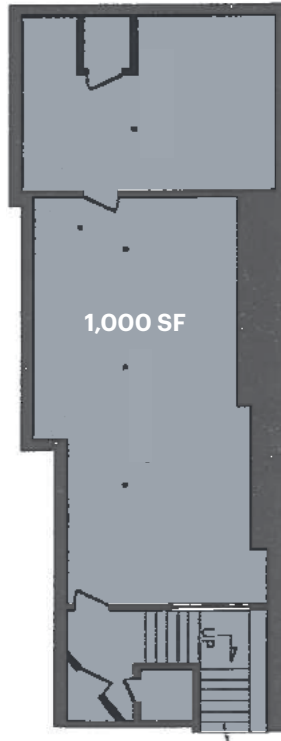
GROUND FLOOR



MEZZANINE



LOWER LEVEL



— 30 FT —

COLUMBUS AVENUE

LOCATION

Between West 80th and 81st Streets

SIZE

Ground Floor	2,000 SF
Mezzanine	600 SF
Lower Level	1,000 SF

FRONTAGE

Columbus Avenue	Approx 30 FT
-----------------	--------------

CEILING HEIGHTS

Ground Floor	Approx 16 FT
--------------	--------------

RENT

Upon request

NEIGHBORS

The Rose Center for Earth and Space, The Museum of Natural History*, Flying Tiger, Polarn O. Pyret, Patagonia, Citibank, Starbucks, Book Culture, Pure Barre, Rituals, The Excelsior Hotel

COMMENTS

High ceilings

Located near Central Park

Site is located across from the Museum of Natural History's new \$325M expansion which attracts 5 million visitors annually

TRANSPORTATION

2017 Ridership Report

81st Street

Annual	4,328,599
Weekday	13,313
Weekend	17,293

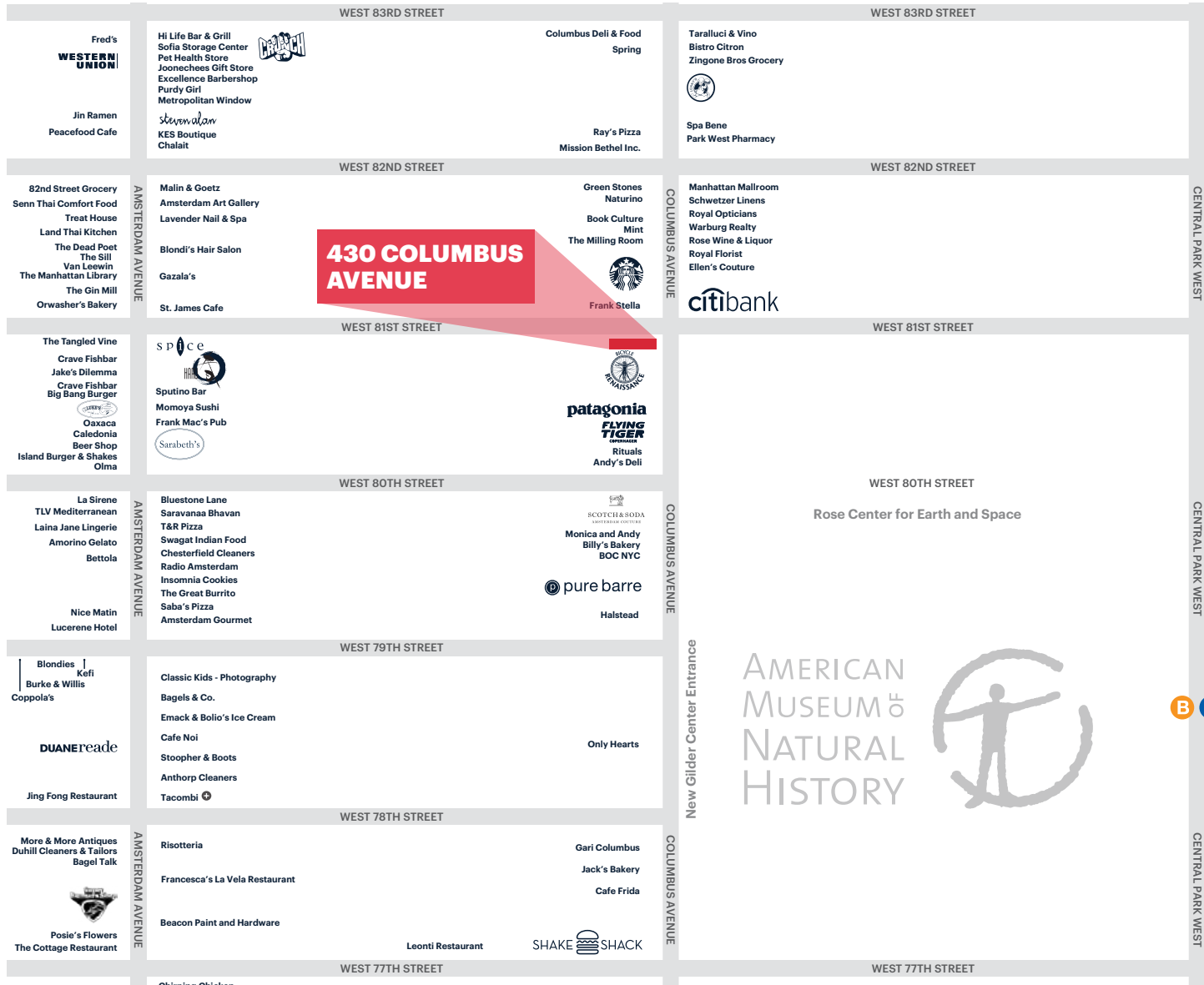
B C

79th Street

Annual	5,102,655
Weekday	15,698
Weekend	20,497

1

AREA RETAIL



**CONTACT
EXCLUSIVE
AGENT**

DOUG KLEIMAN
dkleiman@ripcony.com
 212.750.6565

+ Coming Soon



150 East 58th Street
 15th Floor
 New York, NY 10155
 212.750.6565

Please visit us at ripcony.com for more information

This information has been secured from sources we believe to be reliable, but we make no representations as to the accuracy of the information. References to square footage are approximate. Buyer must verify the information and bears all risk for any inaccuracies.