



RETAIL SPACE

HOLBROOK, NY

328-350 UNION AVENUE

SIZE

Pad Site
+ Drive-thru ± 2,500 SF

CO-TENANTS

Giunta's Meat Farms

NEIGHBORS

Bank of America, CVS Pharmacy, 7-Eleven, Subway, Outback Steakhouse

COMMENTS

Traffic Light Access

Pad facing Union Avenue

CONTACT EXCLUSIVE AGENTS

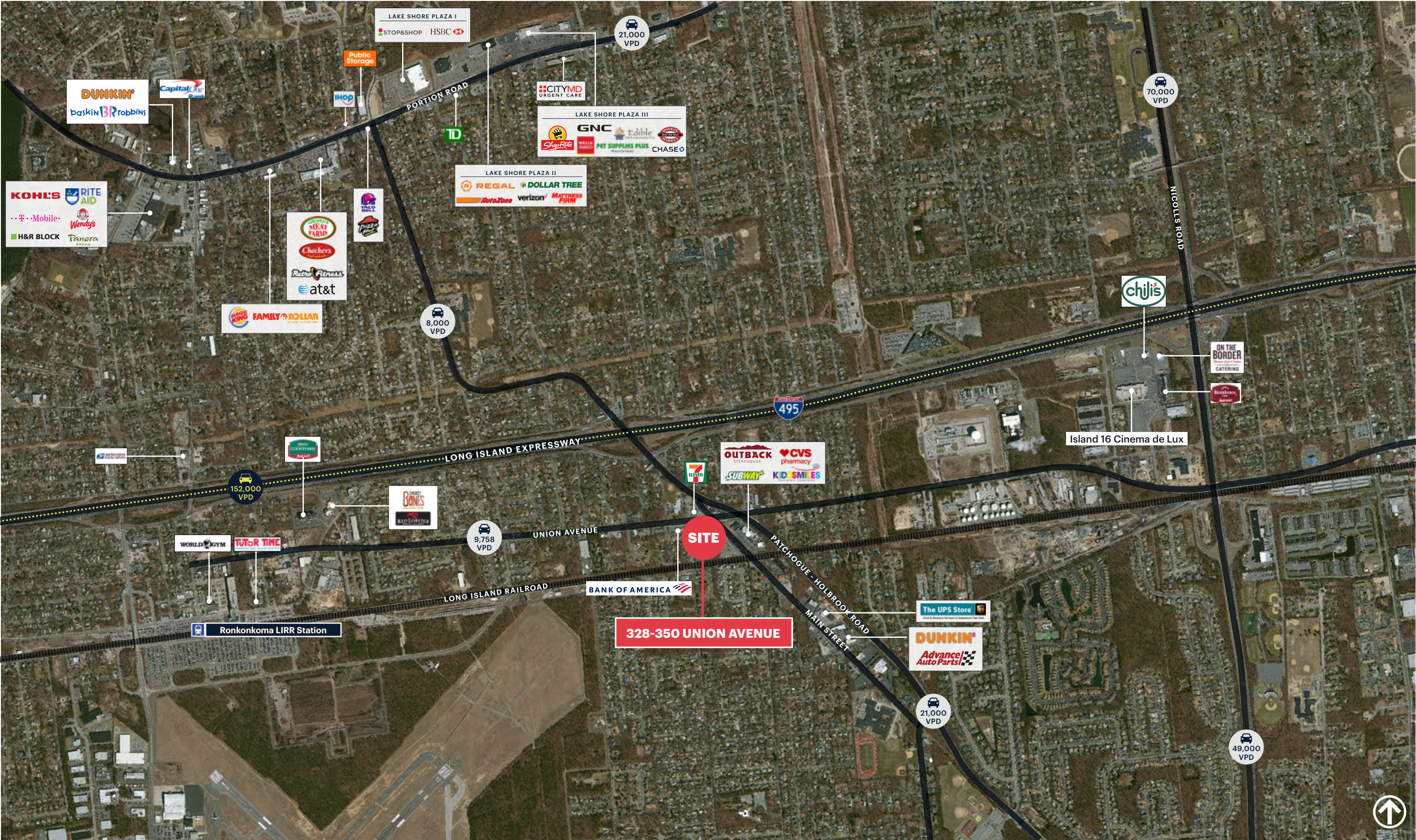
JOANNE ARGENTI

jargenti@ripcony.com
516.933.8880

TOM RETTALIATA

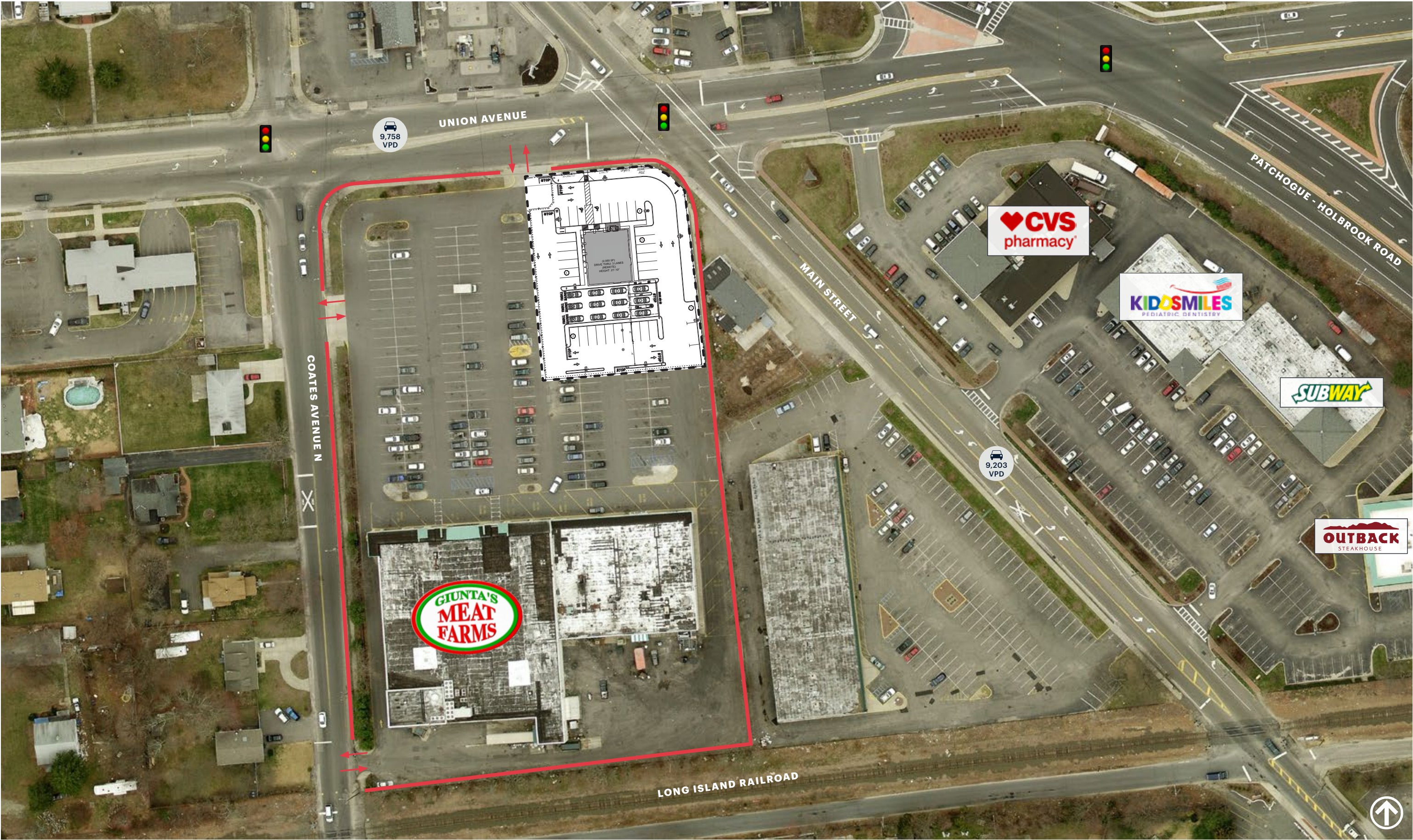
trettaliata@ripcony.com
516.933.8880

MARKET AERIAL

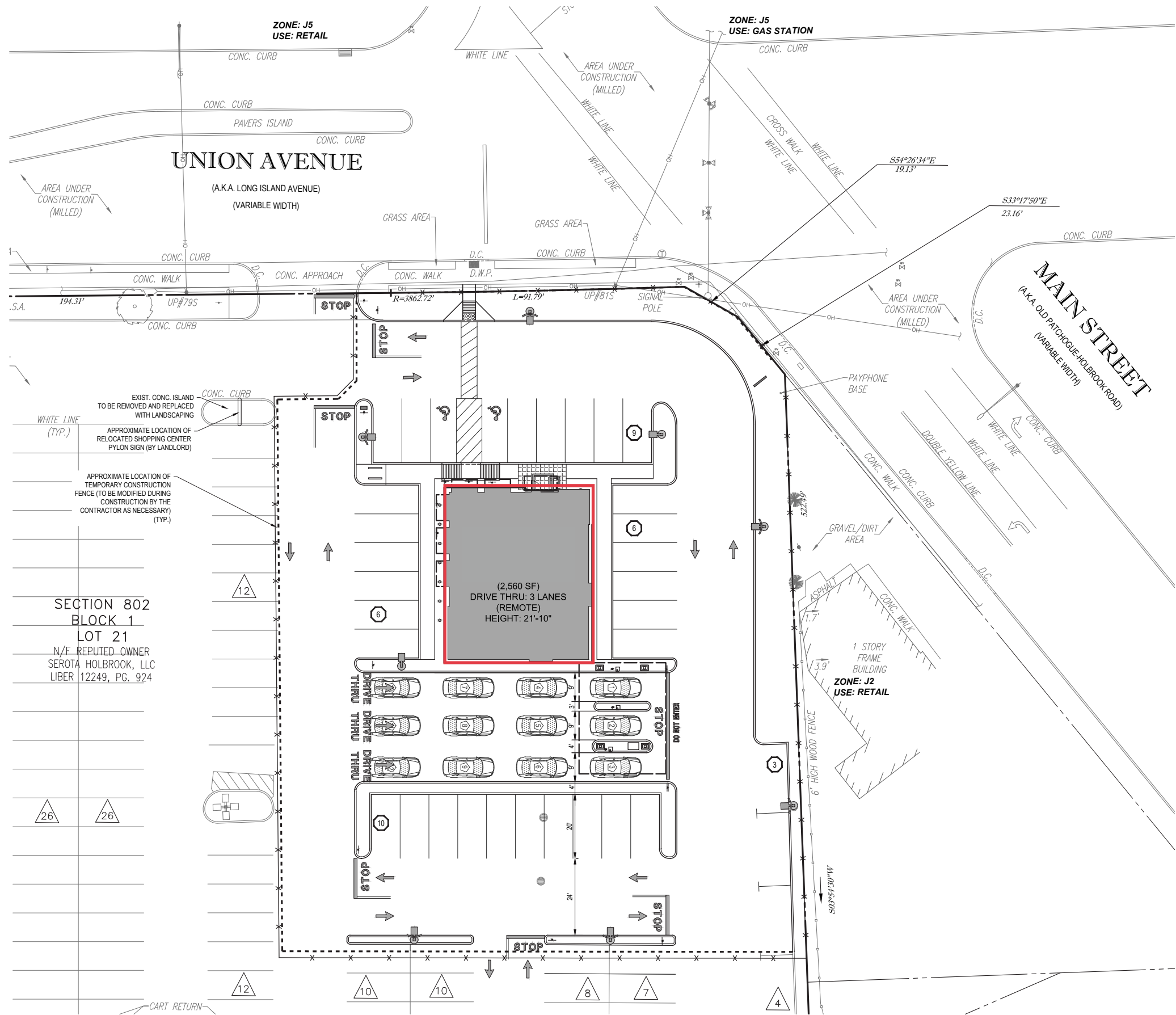




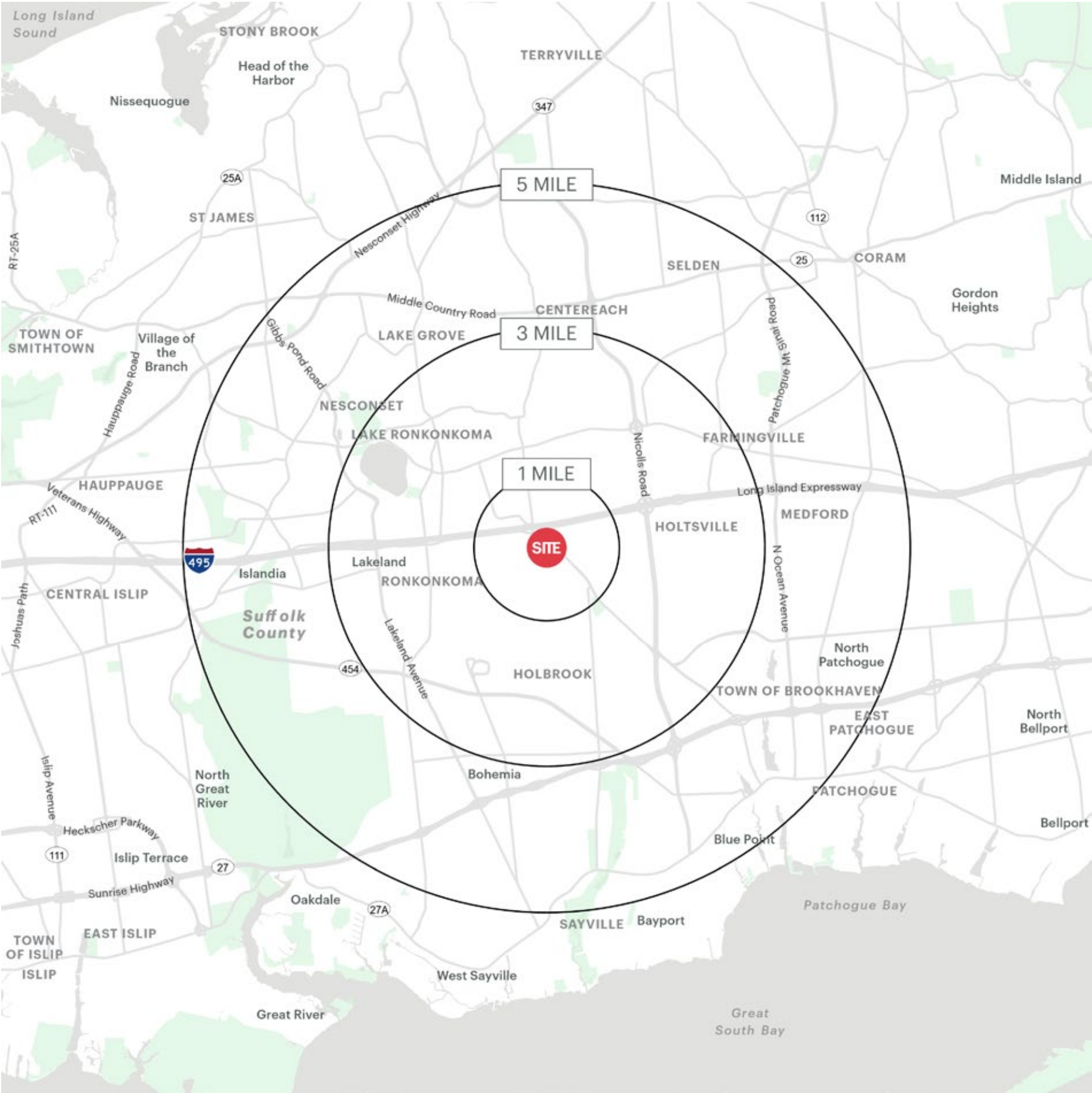
AERIAL



SITE PLAN



AREA DEMOGRAPHICS



328-350 UNION AVENUE HOLBROOK, NEW YORK

1 MILE RADIUS

POPULATION

10,963

HOUSEHOLDS

3,612

AVERAGE HOUSEHOLD INCOME

\$153,864

MEDIAN HOUSEHOLD INCOME

\$118,351

COLLEGE GRADUATES (Bachelor's +)

2,566 - 33.0%

TOTAL BUSINESSES

348

TOTAL EMPLOYEES

3,061

DAYTIME POPULATION (w/ 16 yr +)

8,265

3 MILE RADIUS

POPULATION

85,129

HOUSEHOLDS

29,815

AVERAGE HOUSEHOLD INCOME

\$153,276

MEDIAN HOUSEHOLD INCOME

\$116,710

COLLEGE GRADUATES (Bachelor's +)

21,448 - 35.0%

TOTAL BUSINESSES

4,943

TOTAL EMPLOYEES

46,053

DAYTIME POPULATION (w/ 16 yr +)

86,097

5 MILE RADIUS

POPULATION

231,920

HOUSEHOLDS

81,494

AVERAGE HOUSEHOLD INCOME

\$149,635

MEDIAN HOUSEHOLD INCOME

\$113,603

COLLEGE GRADUATES (Bachelor's +)

63,305 - 38.0%

TOTAL BUSINESSES

10,876

TOTAL EMPLOYEES

100,799

DAYTIME POPULATION (w/ 16 yr +)

212,787

AREA DEMOGRAPHICS

